

HTW BERLIN

in figures

160

1994



htw

Hochschule für Technik
und Wirtschaft Berlin

University of Applied Sciences

The Treskowallee campus is located in a partially listed building complex in the district of Lichtenberg. The business and law faculties are located there. Around 4,000 young people study on this campus.



Good to know



htw.

**Berlin's largest University
of Applied Sciences**

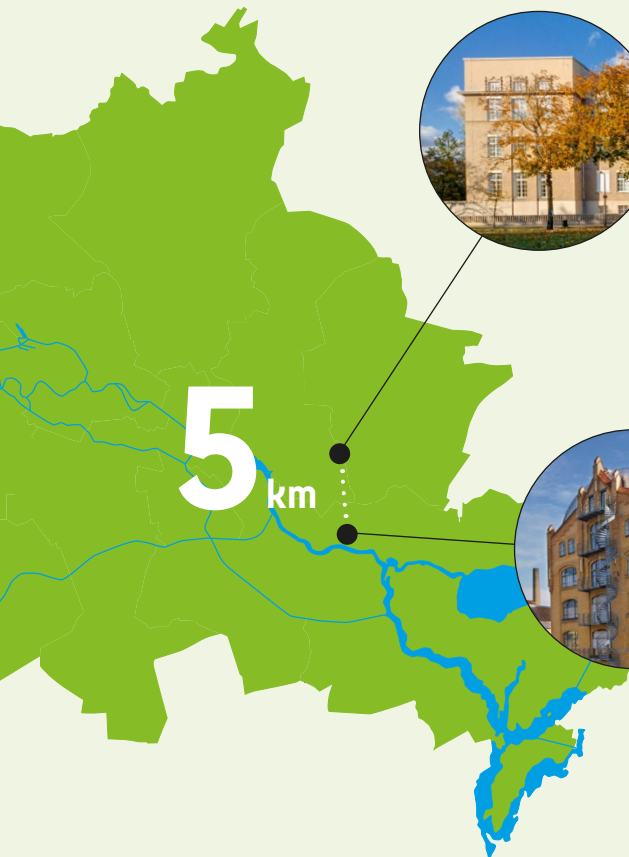


**Campus
Treskowallee**



**Campus
Wilhelminenhof**

5
km



Good to know

5 faculties

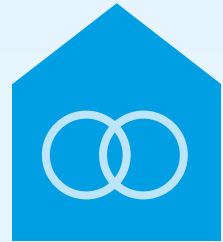
1 School of Engineering – Energy and Information

2 School of Engineering – Technology and Life


3 HTW Berlin Business School

4 School of Computing, Communication and Business

5 School of Culture and Design



160
partner universities

 **84** Mio €
annual university budget



legally independent since

1994

80

degree programmes

3.000 per year

graduates

Berlin's most popular university

according to StudyCheck Award 2026

Top University of Applied Sciences in Germany

according to WirtschaftsWoche Ranking 2024

4.700 per year

courses


40

average group size


in lectures

Research a



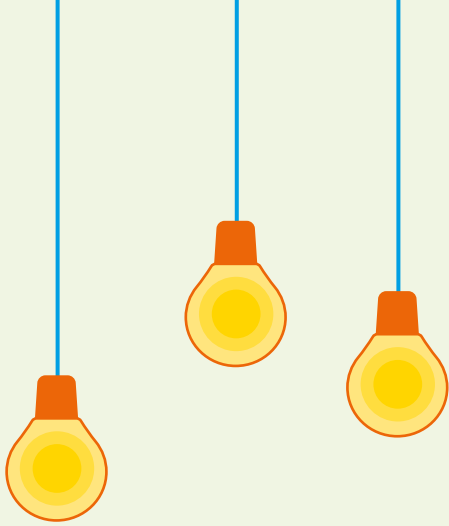
Every year, over 200 research projects are executed at HTW Berlin, many of them in cooperation with practice partners. In the process, research at HTW Berlin follows defined standards: the Ethical Guidelines, the Guidelines for Ensuring Good Scientific Practice and an Open Access Policy. 

nd transfer

A photograph of three students sitting outdoors in front of a brick building with blue window frames. A young woman with brown hair and bangs, wearing a white t-shirt and blue jeans, is writing on a tablet with a white pen. A young man with a shaved head, wearing a black leather jacket over a white shirt and blue plaid pants, is looking at the tablet. A young woman with long brown hair tied in a bun, wearing a dark blue jacket, is also looking at the tablet. The scene is brightly lit, suggesting daytime.

Degree programmes at HTW Berlin are characterised by a high level of practical relevance, small groups with a maximum of 40 students and an excellent infrastructure. Great emphasis is placed on foreign language training.

Research a



500
cooperation partners

5 research focuses

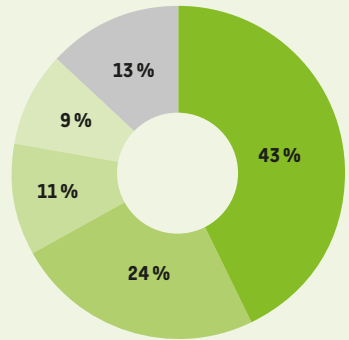
Digital Economy - Creative Industries

Health Research

Industry and the Working World of the Future

Renewable Energies - Energy Efficiency

World Cultural Heritage



- companies
- HEI / universities
- research institutions
- clubs / associations
- other



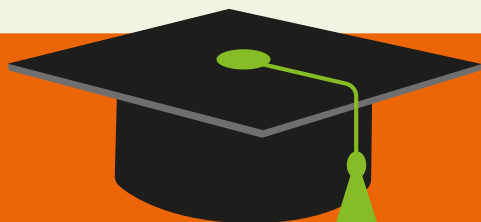
100
start-ups since 2017

nd transfer



100

ongoing cooperative
doctorates



14 Mio €

third-party funding raised each year

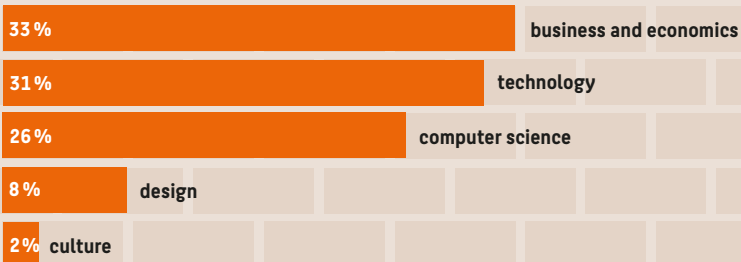
Study an



16.000
students

130
nationalities

students by field of study



and teaching



300 professors

230 research assistants

800 lecturers
part-time



110 laboratories and studios

430 employees
service, technical and administrative staff

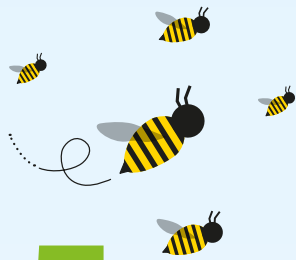
Our students can get involved in a variety of student initiatives, including the urban garden on the Wilhelminenhof campus directly by the banks of the the River Spree. This is also a wonderful place to take a break.



Sustainability

2.500 sqm

solar cells on
campus roofs



5

bee colonies



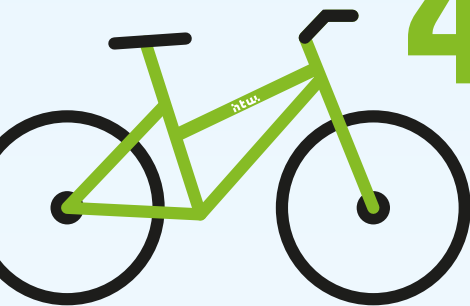
with 140,000 bees in summer



and 45,000 bees in winter

140 years

Oldest tree: poplar
in the Treskowallee
natural monument
Height: 35 m
Trunk circumference: 505 cm

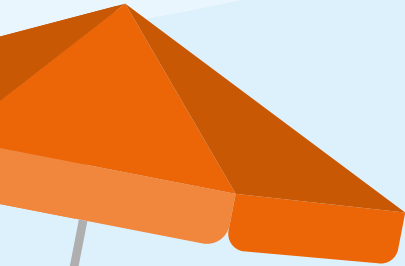


4

HTWheels

for environmentally-friendly travel
from campus to campus

Last but not least



14.167

seats inside



7

public artworks

70

deckchairs

ideal for outdoor lectures



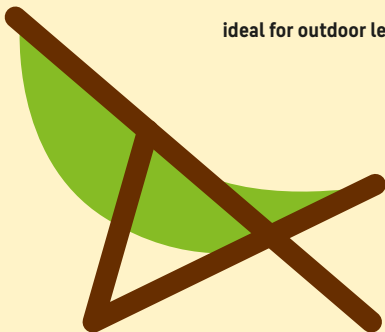
5

beach chairs

1

beach

with direct access to the River Spree



The Wilhelminenhof campus is located in the district of Treptow-Köpenick. The old industrial site has been transformed into a cutting-edge science location. This is where the technology, computer science, design and culture degree programmes are at home. Around 10,000 students are based here.



If you'd like to discover even more about HTW Berlin, then feel free to check out our website or social media channels, or even to stop by in person.

 [htw-berlin.de](https://www.htw-berlin.de)

 [linkedin.com/school/htwberlin](https://www.linkedin.com/school/htwberlin)

 [instagram.com/htwberlin](https://www.instagram.com/htwberlin)

 [youtube.com/htwberlin](https://www.youtube.com/htwberlin)

 [facebook.com/htwberlin](https://www.facebook.com/htwberlin)

#HTWelcome #HTWBerlin

Imprint

Publisher: HTW Berlin – University of Applied Sciences, President

Editorial team: Communications Team, **Design:** minkadu Kommunikationsdesign

Photos: Jan-Christoph Hartung, Andreas Kettenhofen and Max Schäfer, Alexander Rentsch

Copy deadline: June 2026